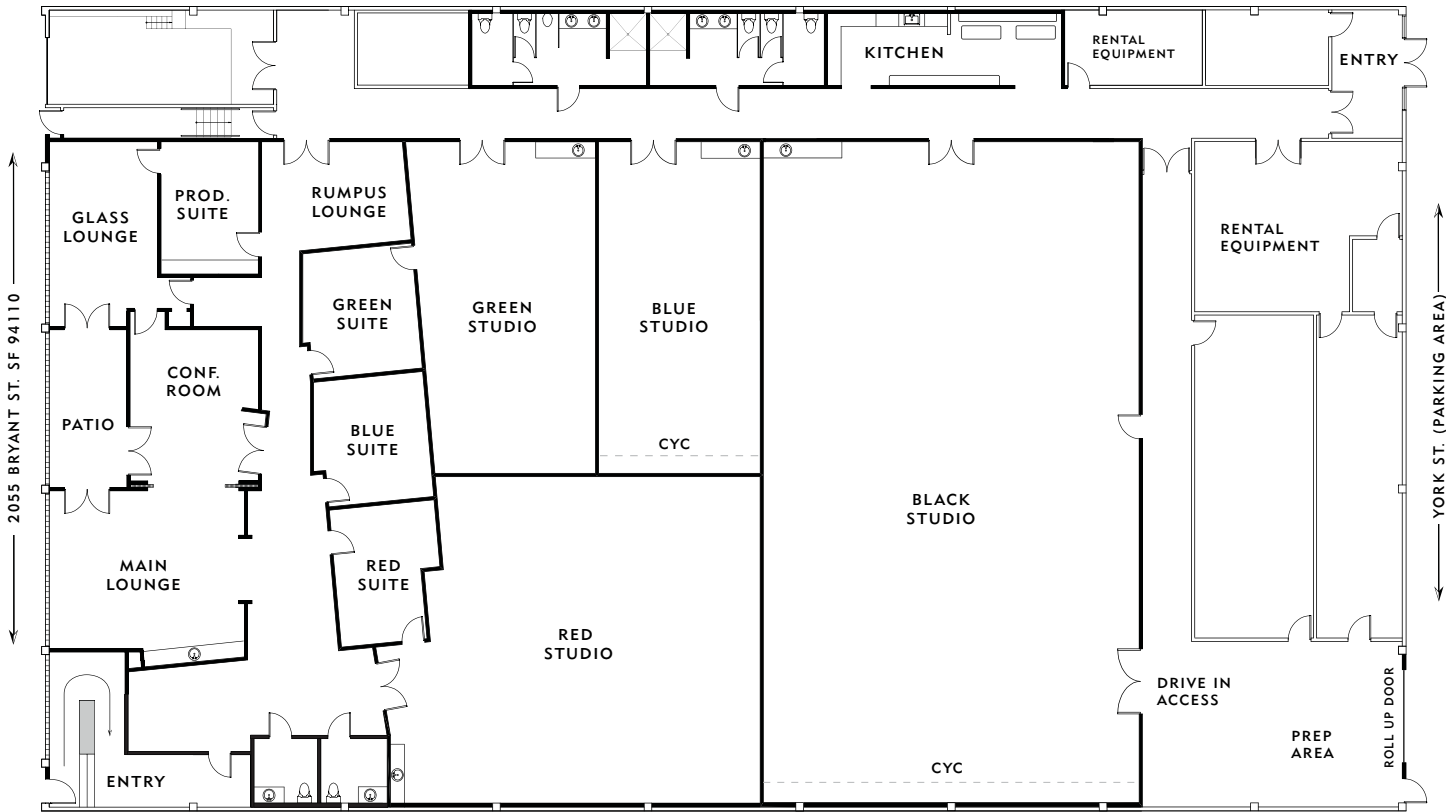




STUDIO RENTAL SPECS



BLUE STUDIO:

900 sq.ft. (22' X 41')
Cyc: white 22'W x 19'D x 18'H
Walls: all white
Height: 18' clear to trusses
Entry: 8' high x 6' wide
Power: 600 amps 3-phase

GREEN STUDIO:

985 sq.ft. (24' X 41')
Floor: concrete (no cyc)
Walls: all white
Height: 18' clear to trusses
Entry: 8' high x 6' wide
Power: 600 amps 3-phase

RED STUDIO:

1,900 sq.ft. (41' X 49')
Floor: concrete (no cyc)
Walls: all white
Height: 18' clear to trusses
Entry: 8' high x 6' wide
Power: 600 amps 3-phase

BLACK STUDIO:

3,800 sq.ft. (47' X 81')
Cyc: white 47'W x 48'D x 18'H
Walls: all white
Height: 18' clear to trusses
Drive-in entry: 8' high x 8' wide
Power: 1200 amps 3-phase
Overhead flats (2): each 20'x40'

ALL STUDIOS INCLUDE:

- White cyc painting prior to first rental day; 24 hours notice required
- Minimum 600 amps of 3-phase power (Black Studio has 1200 amps)
- Unlimited power usage (for still photography shoots only)
- 18' height clearance to trusses, 19'-28' to ceiling
- Wi-Fi & unlimited local and long distance telephone calls
- Private stereo system w/ iPod dock & CD player
- Heat and air conditioning
- 2 to 4 assigned parking spaces per studio
- Rolling shoot cart & rolling hair/make-up station & stools
- Kitchenette in each studio w/ 8' granite countertop, mini fridge, sink, coffee maker, complimentary coffee & water, couch, coffee table
- Access to common spaces: lounges, conference room, lunch room, patio, kitchen, production room w/ fax, printer, copier & internet computer

PRIVATE SUITE(S):

Blue Suite, Green Suite, or Red Suite: available only in combination with studio rentals
Approx. 15' X 14' each